

EnSuite is a software solution designed to provide quick access to critical engineering information residing in CAD files, no matter which CAD system was used to author. EnSuite can be used across the enterprise, with minimal training, and does not require CAD licenses, which eliminates expensive costs.

# EnSuite

## A Solution for Leveraging CAD Data Across the Enterprise

### Analyze

Analyze and query data quickly from CAD files using simple user-friendly productivity tools. This includes distance measurements, calculating mass properties, bounding volumes, BOM, and more. No prior CAD experience required.

### View

View all major native CAD, standard formats and Visualization & Point Cloud files in a single viewer, independent of the source CAD system.

### Share

Share your CAD Files, mark-ups, and reports with your extended enterprise, using best-in-class translators, collaboration tools, and a 3D PDF generator.

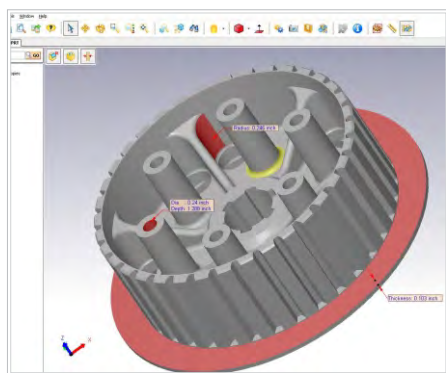
### Automate

Automate designs and processes using EnSuite's automation tools. These tools can free up your time to focus on innovative and productive activities.

## EnSuite Features

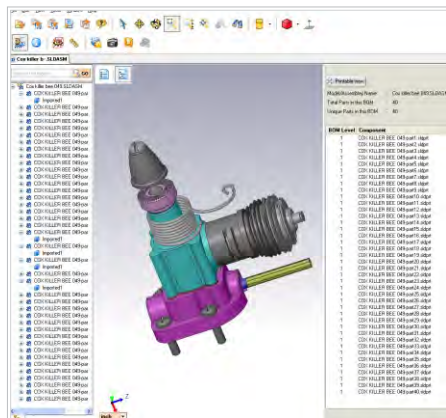
### Measure (Geometry and Features)

EnSuite can be used to measure geometric entities and feature data. It also makes working with assemblies easy by providing access to interface data in assemblies.



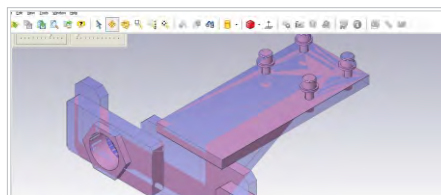
### Product Information

EnSuite provides product information, like Bill of Materials and Parent-Child information, in assemblies. This information can help purchasing identify all of the parts in an assembly in preparation for make-or-buy decisions.



### Compare Parts and Assemblies

EnSuite provides tools for visual verification and comparison of part and assembly files by overlapping the part geometry, comparing geometry with points on second model, comparing the difference in the assembly structure, and transformation. This is especially useful for quality control purposes and can be used as the First Level Inspection.



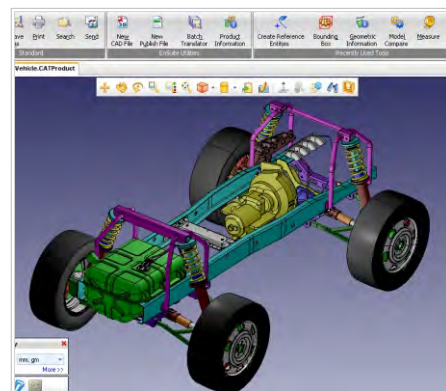
### Collaboration

EnSuite allows mark-up and redlining functionality for easy collaboration of design data. This enables users in the extended product development team, who do not have access to the originating CAD system, to participate in the design review process. In many cases, an inefficient paper-based review process can be converted to a much more efficient electronic process.



### Multi-CAD Assembly

EnSuite provides the ability to create an assembly by bringing in parts/assemblies from multiple CAD formats. This is especially useful in a heterogeneous supply chain environment where suppliers and OEMs work with multi-CAD data towards the same product design.



## Supported Formats



## Contact Information

CALL : +1-248-932-5295

EMAIL: [sales@cadcam-e.com](mailto:sales@cadcam-e.com)

WEB : [www.cadcam-e.com](http://www.cadcam-e.com)